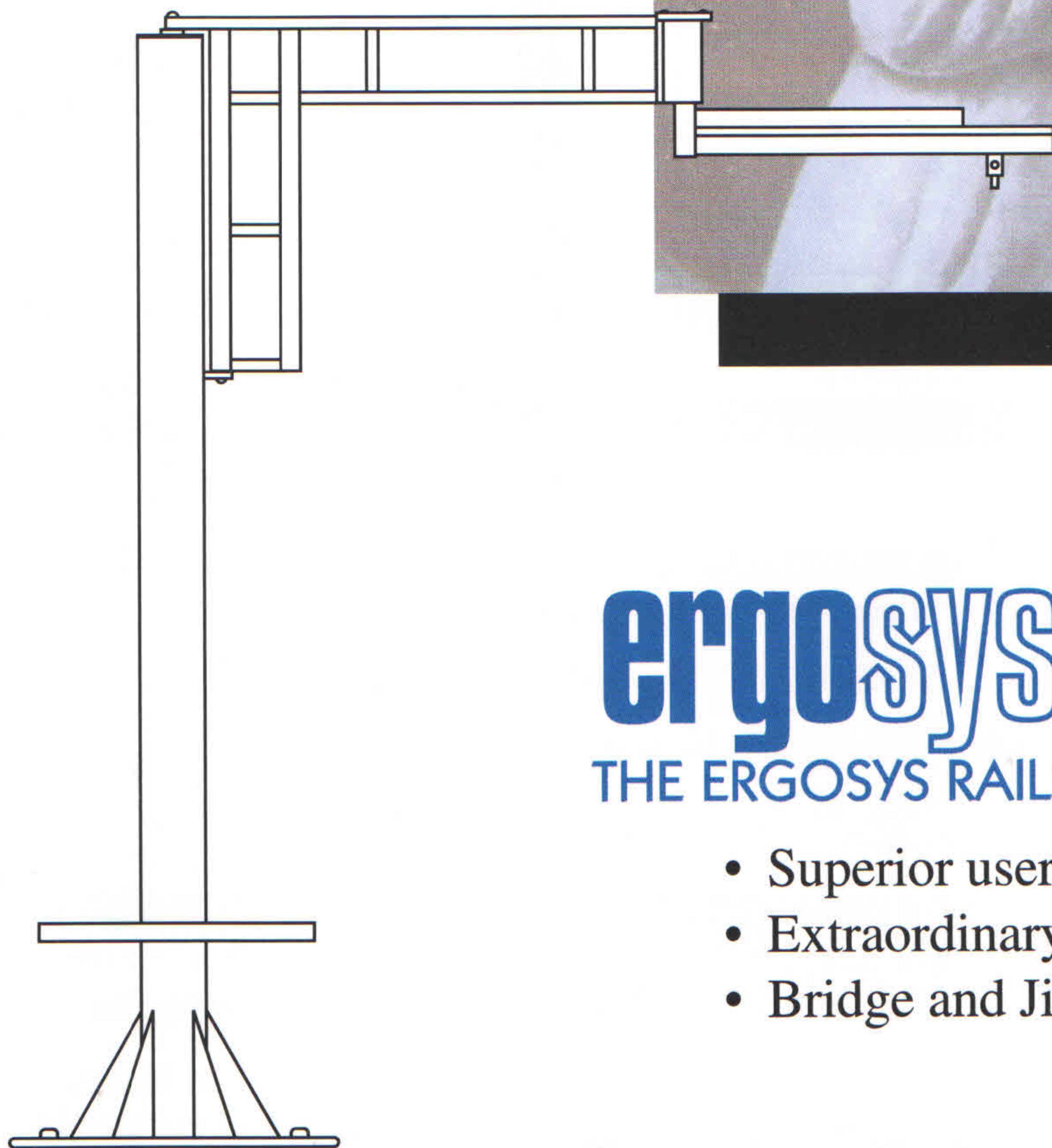
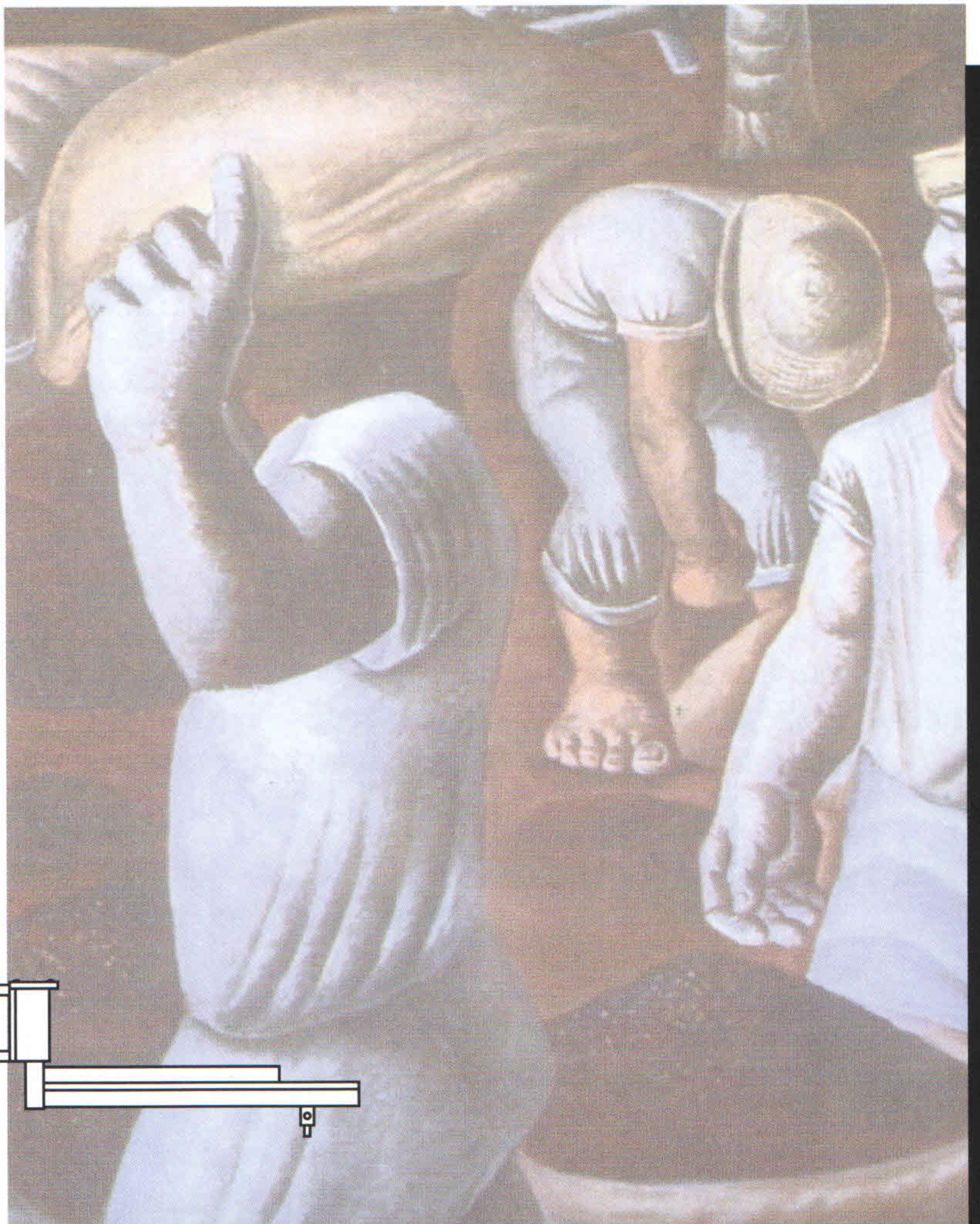


ErgoSys Rail Systems



ergosys rail

THE ERGOSYS RAIL® EDGE

- Superior user-friendly design
- Extraordinary maneuverability
- Bridge and Jib cranes to fit your space

SOLUTIONS

FORM

ERGOSYS RAIL CRANES ARE DESIGNED IN SEVEN BASIC CONFIGURATIONS.

Bridge cranes accommodate rectangular workspace. Bridge systems can be mounted to a ceiling or installed as free-standing with floor anchors. These enclosed-track systems are available in lightweight (250-500 lb. capacities) or heavy-duty rail (1,000-2,000 lb. capacities). Both sizes offer a free range of motion and are enhanced ergonomically by controlled oscillation action at both ends. Your load automatically follows your lead with consistent ease.

Jib Cranes offer 180°-360° rotation in a circular area. Jibs are available with straight or articulating booms. Standard mounting is to either floor or pillar, but may require a special foundation in some cases. Movement is freer at the end of the boom, but becomes more restricted as the load is moved toward the pivot. If more than 40% of your work is done within the inner half of the radius of your straight boom jib crane, you may want to consider an articulating jib.

Monorails are a simple solution to an application requiring linear travel along one axis, and are most commonly used in maintenance, storage and transfer areas.

FIT

YOUR LIFTING SYSTEM SHOULD FIT YOUR WORKSPACE.

Over-extending a bridge length can result in more work for your operator, and even equipment failure. In higher volume areas, shorter spans are recommended. Longer bridges are generally used in low volume or maintenance and storage areas.

When ceiling mounting a bridge system, the structural integrity of the building must be taken into consideration. **ErgoSys Rail's** unique suspension system allows freedom from interference of structural supports.

Free-standing, or floor-supported, systems require specific concrete reinforcement of at least 6 inches, but eliminate overhead stress to your existing structure.

FUNCTION

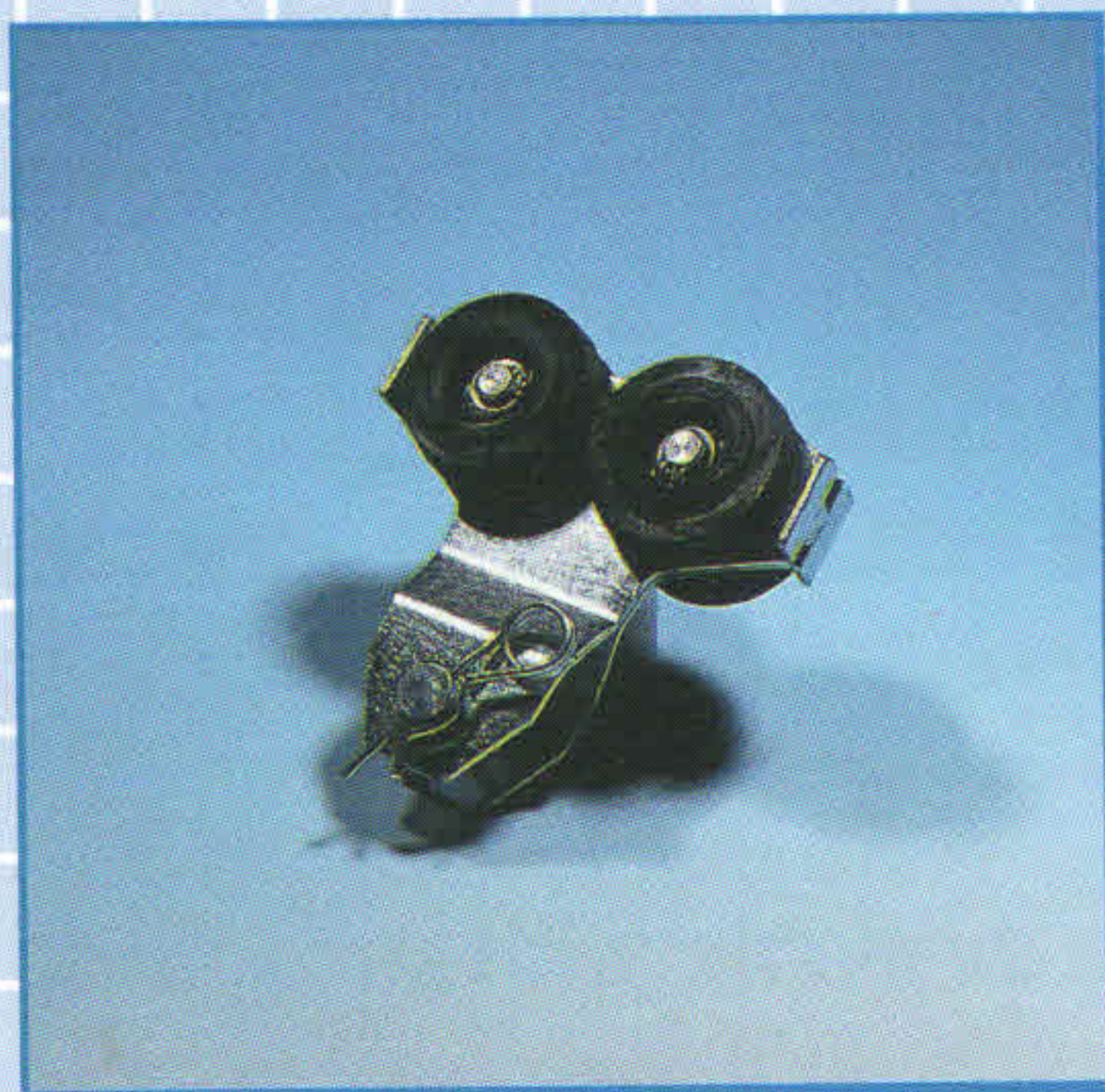
THE DEMANDS OF YOUR TASK ARE ANSWERED BY DESIGN.

A properly designed ergonomic handling system is proven to reduce the risk of lost time injuries and workers compensation claims. The system should be adaptable to any operator positioned at the work station.

Manual work stations are more productive and time efficient than motorized crane systems. However, if the load must be controlled over an inaccessible area, such as a vat or pit, then you should consider a motorized system.

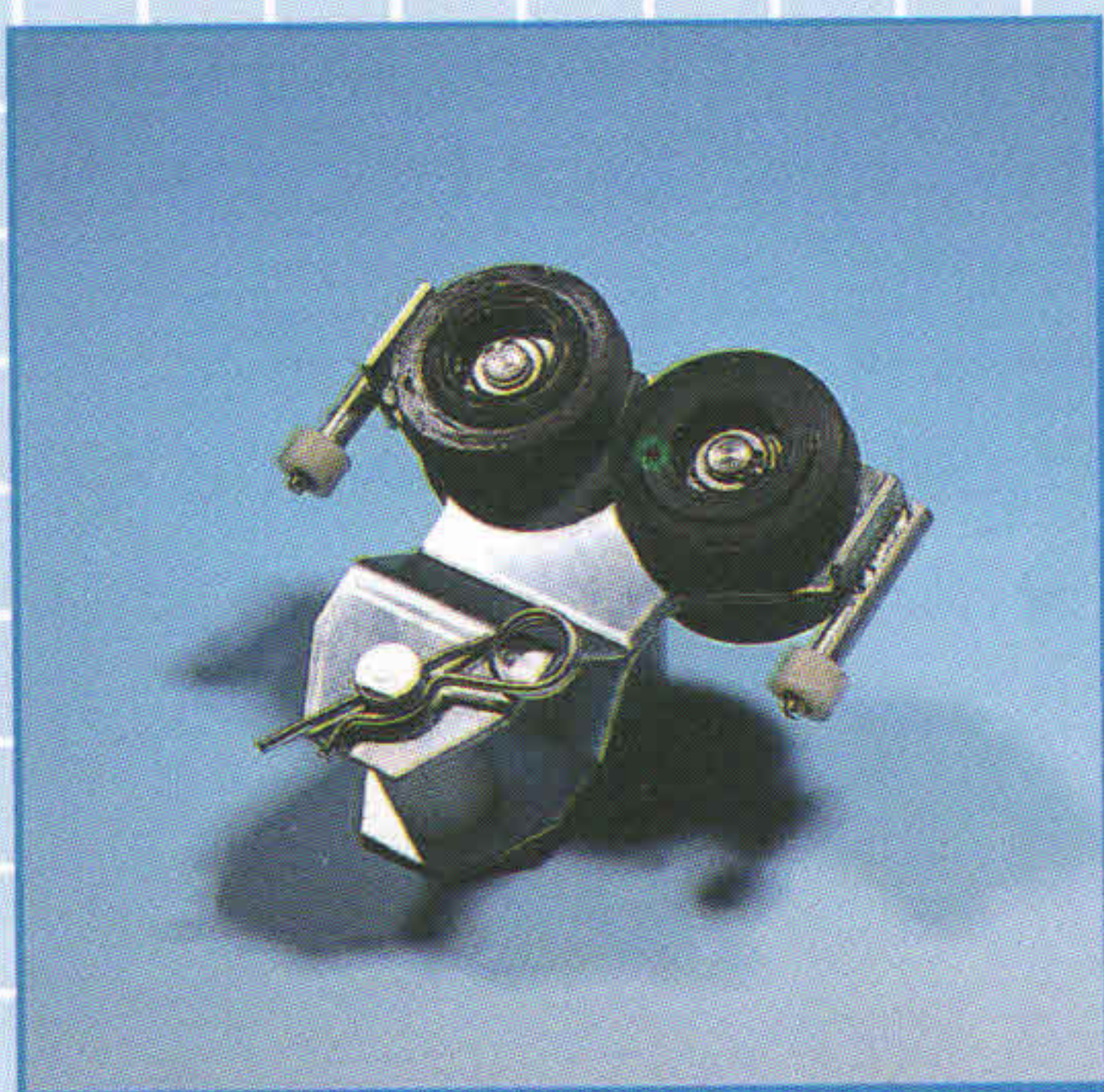
ergosys rail

COMPONENTS



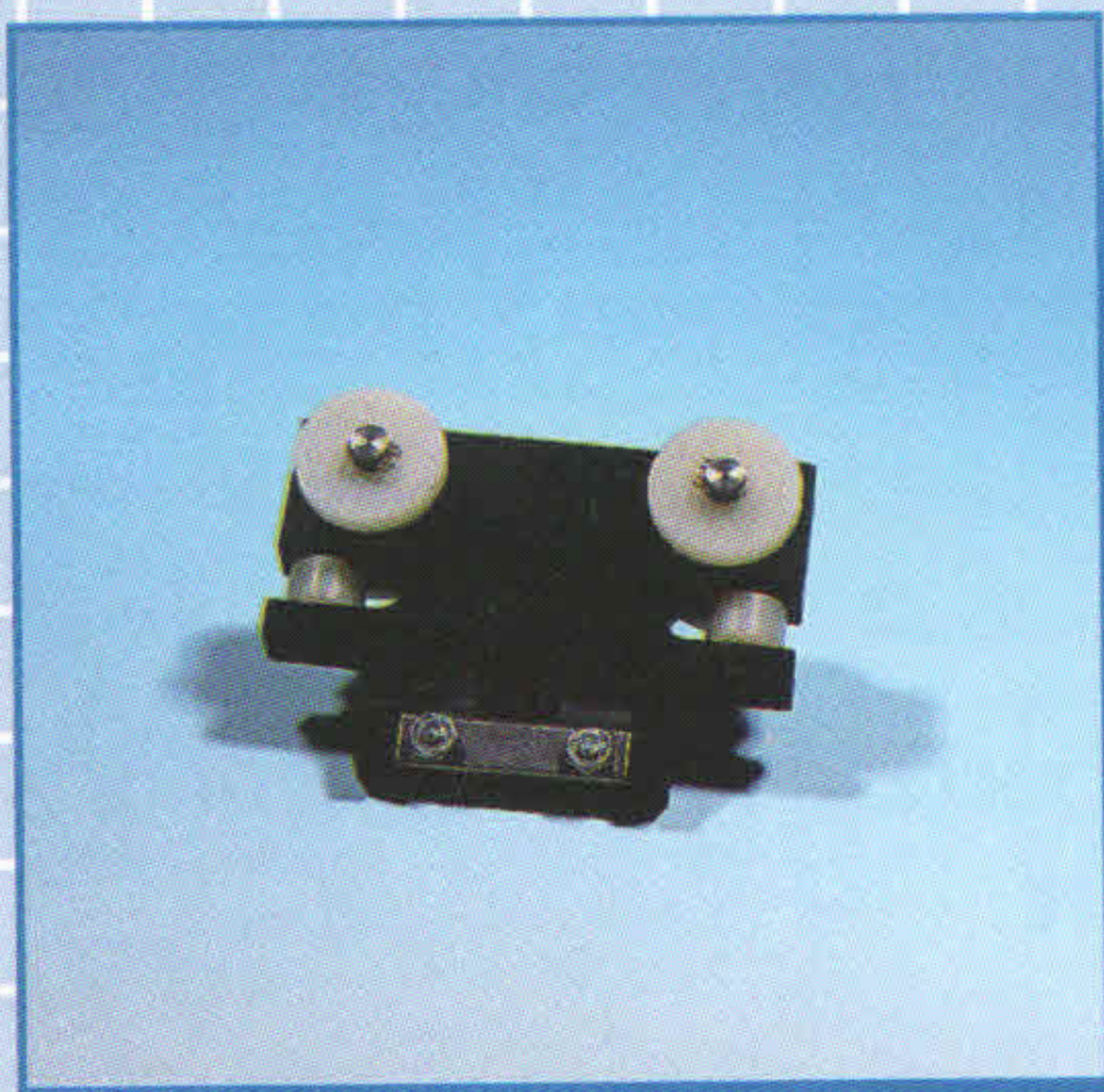
91001 Standard trolley

Designed with nylon wheels to allow effortless movement along enclosed track, this saddle will accommodate most hoists. Also used to suspend bridge from runways on ceiling mounted bridges.



91003 Teletwist Trolley

Specifically designed to provide the same ease of movement in our floor supported cranes as exists in our ceiling mounted cranes. Allows for economical fixed runways with articulating bridge. It is wider with nylon side rollers to prevent binding.



91002 Festoon Trolley

Light weight with nylon wheels to offer low rolling resistance while providing neat festooning of the suction hose or air lines.

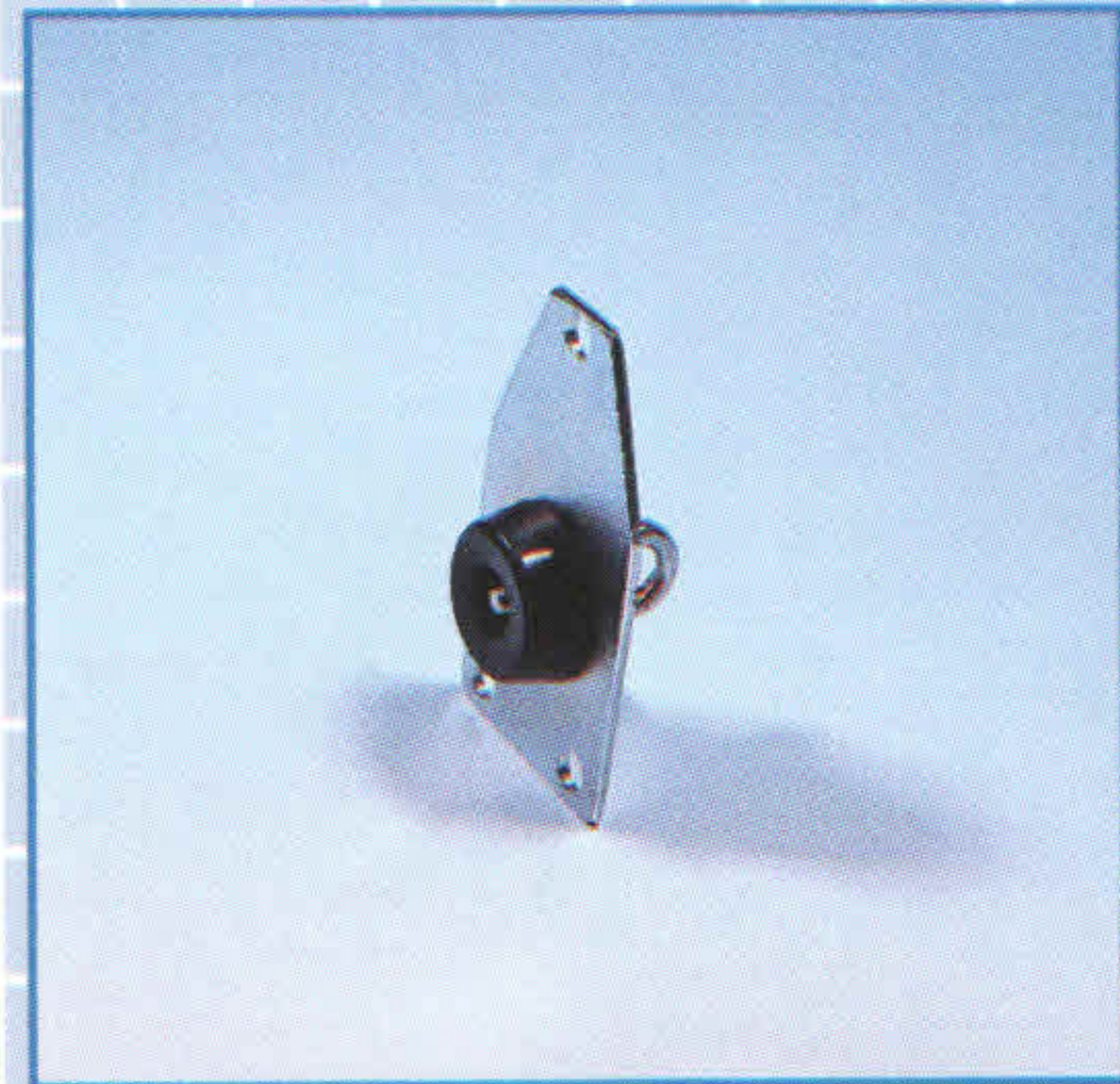


10906 Festooning Clamps

Attaches suction hosing or air lines to festoon trolleys.

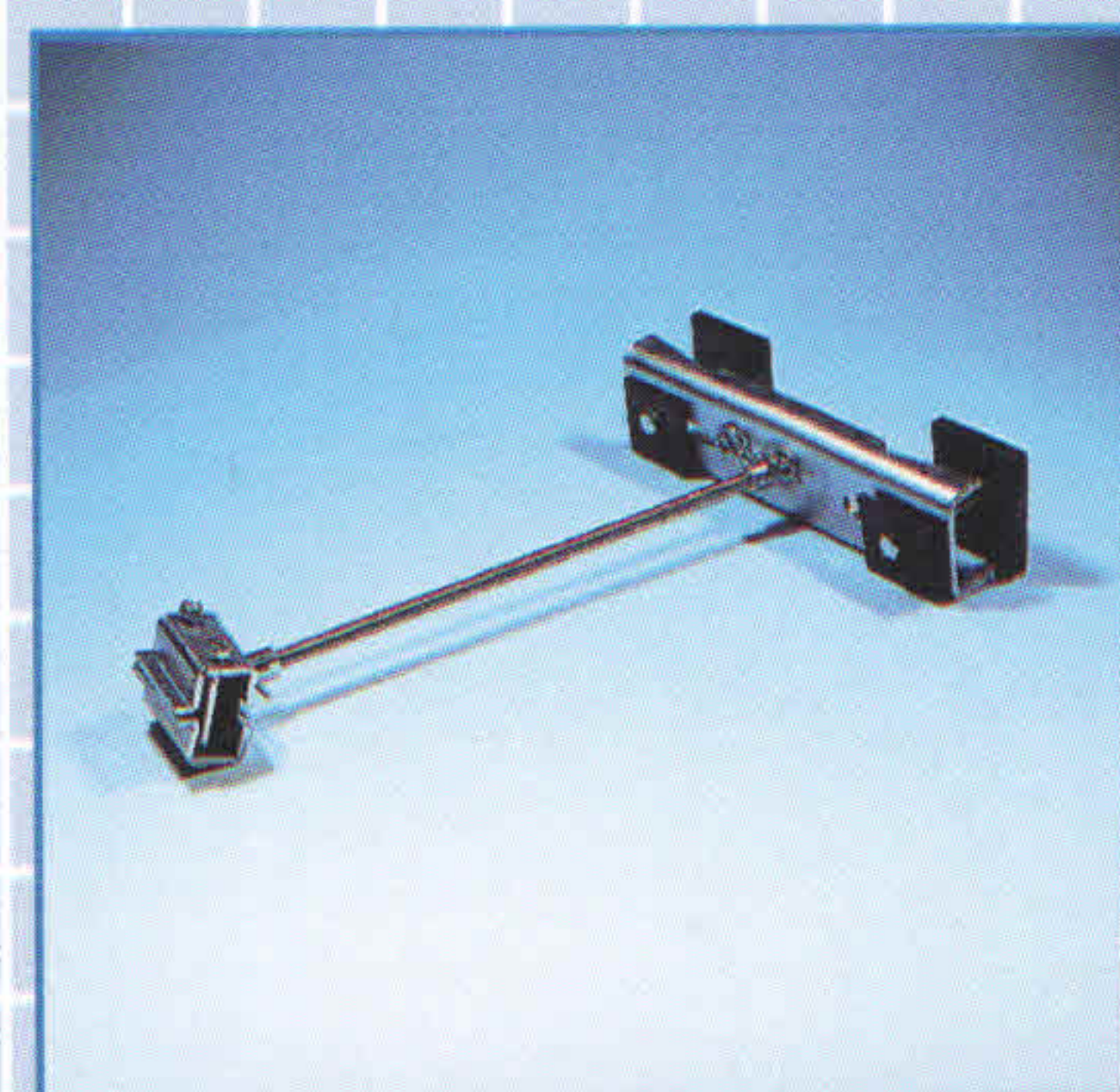
80014 End Cap

Steel with rubber bumper, provides cushioning effect when trolleys hit end of rail.



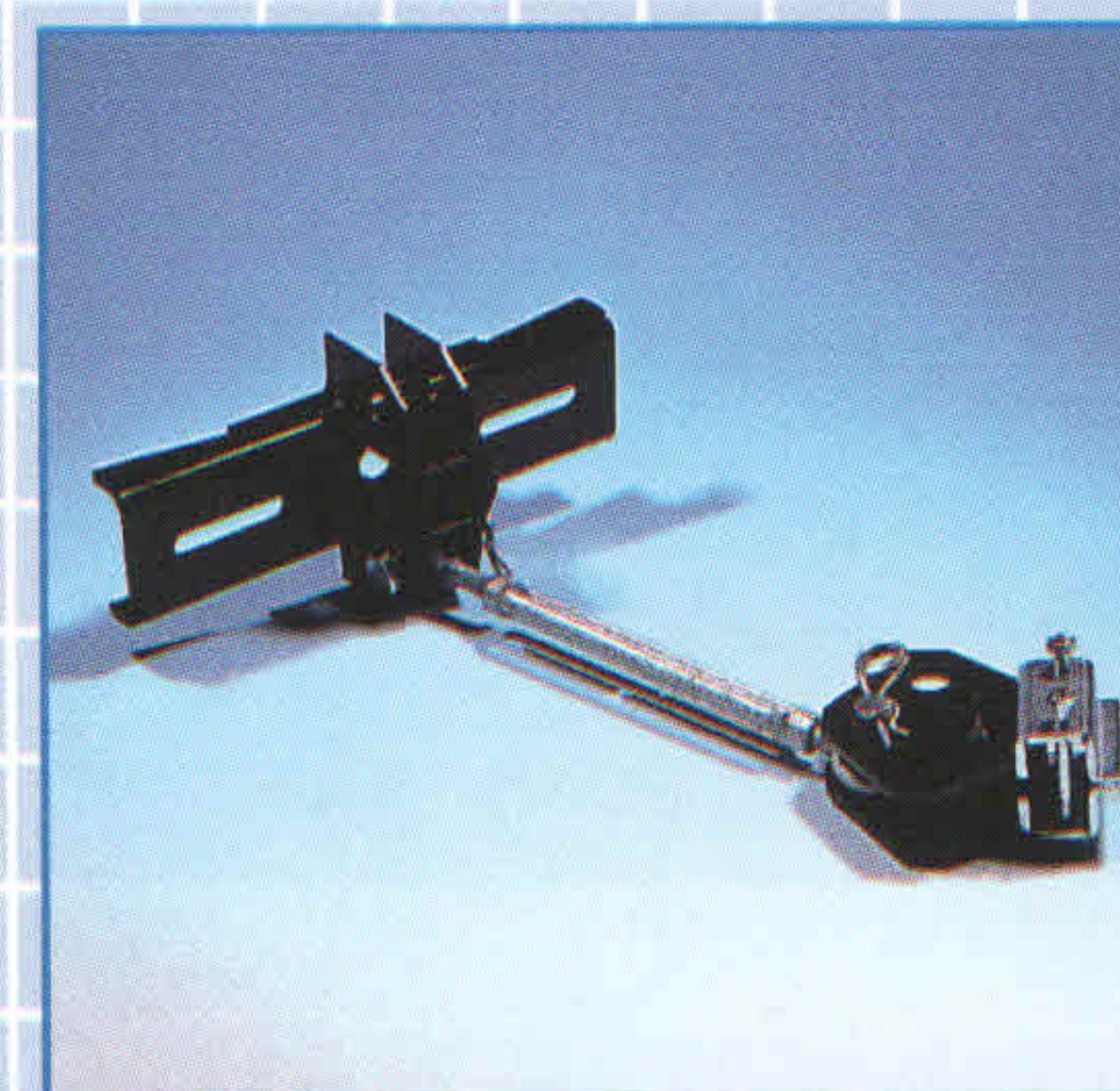
80103 Hanger Kit

Includes all parts necessary to hang one runway point, includes standard 3' threaded hanger rod.



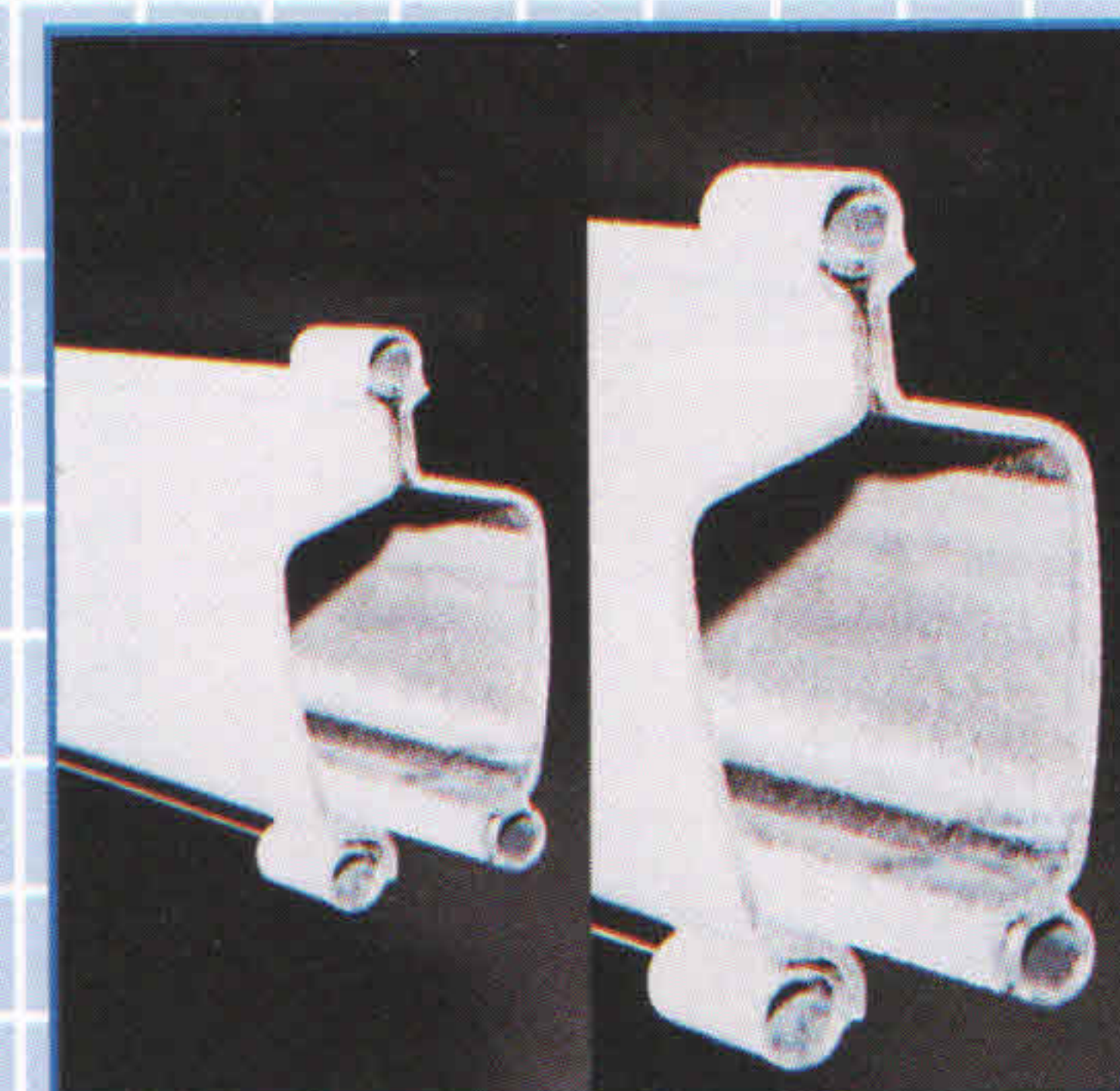
90033 Sway Bracing Kit

Contains upper and lower sway brace bracket assemblies with one threaded rod of appropriate length with end fittings and turnbuckles. Required when hangers are longer than 6'.



Track

ESR1 Lightweight enclosed track designed to accommodate 250 & 500 lb. capacities.
ESR2 Heavyweight enclosed track accommodates 1000 & 2000 lb. capacities.



WORK STATION JIB CRANES

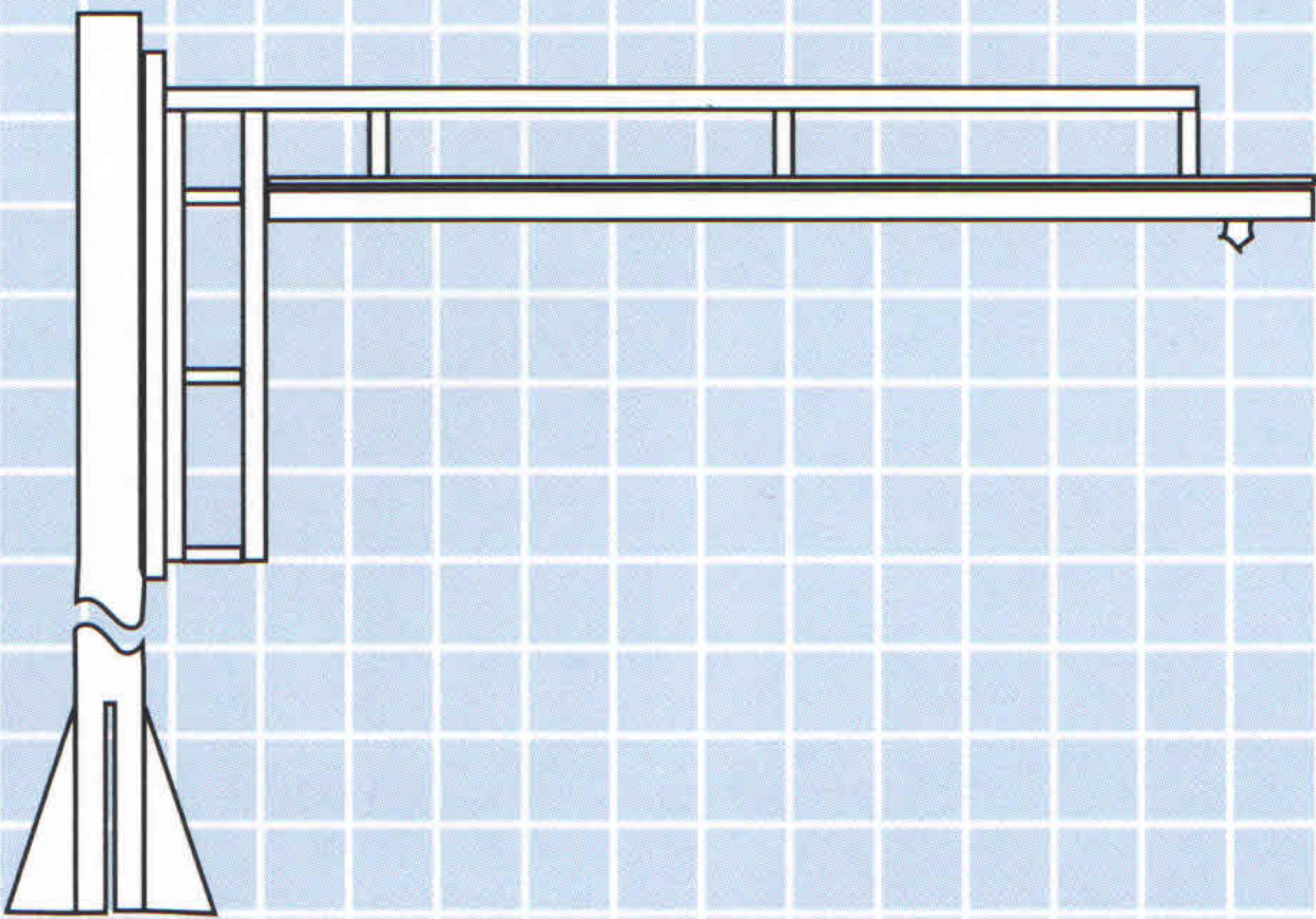
FREE STANDING



DESCRIPTION

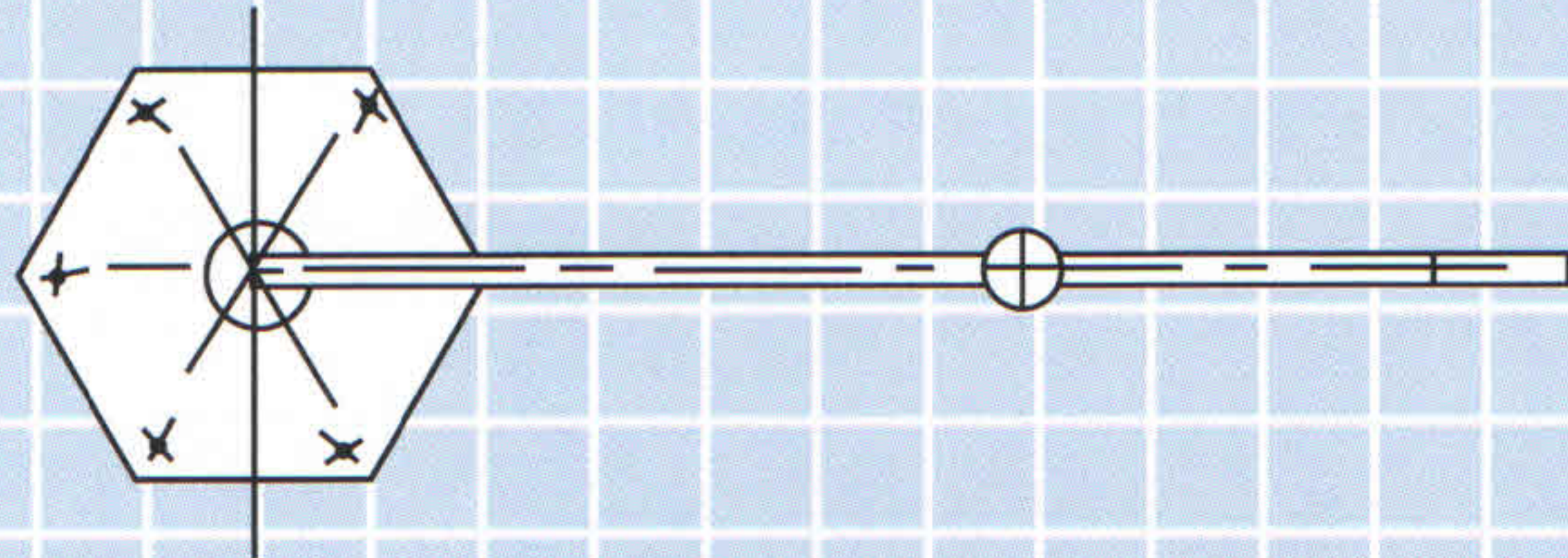
Capacity: 250 lbs. with spans from 4' to 14'
2000 lbs. with spans from 4' to 10'

- Ergonomically designed for ease of movement
- Designed for restricted work area
- Allows for 360° rotation
- Also available in wall mount



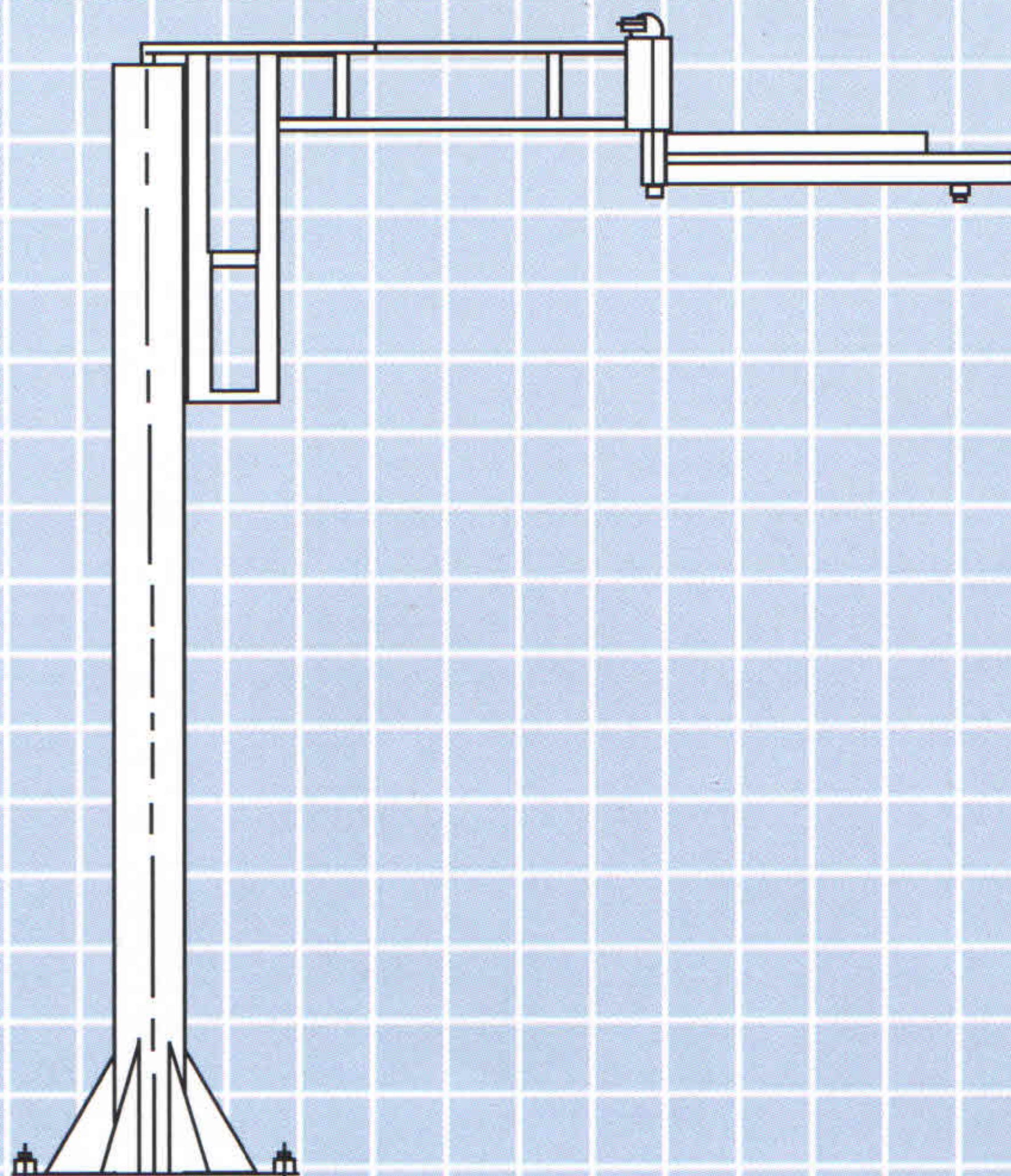
ARTICULATING BOOM

Capacity	Hub	Span	Model Number
250#	10'	12'	ESJAB10-12-250
		14'	ESJAB10-14-250
350#	10'	8'	ESJAB10-8-350
		10'	ESJAB10-10-350



STRAIGHT BOOM

Capacity	Hub	Span	Model Number
250#	10'	12'	ESJSB10-12-250
		14'	ESJSB10-14-250
350#	10'	8'	ESJSB10-8-350
		10'	ESJSB10-10-350
500#	10'	8'	ESJSB10-8-500
		10'	ESJSB10-10-500
		12'	ESJSB10-12-500
		12'	ESJSB12-8-500
1000#	10'	10'	ESJSB12-10-500
		12'	ESJSB12-12-500
		12'	ESJSB10-8-1000
	12'	10'	ESJSB10-10-1000
		12'	ESJSB10-12-1000
		8'	ESJSB12-8-1000
2000#	10'	10'	ESJSB12-10-1000
		12'	ESJSB12-12-1000
		8'	ESJSB10-8-2000
	12'	10'	ESJSB10-10-2000
		12'	ESJSB10-12-2000
		8'	ESJSB12-8-2000
	10'	ESJSB12-10-2000	
	12'	ESJSB12-12-2000	



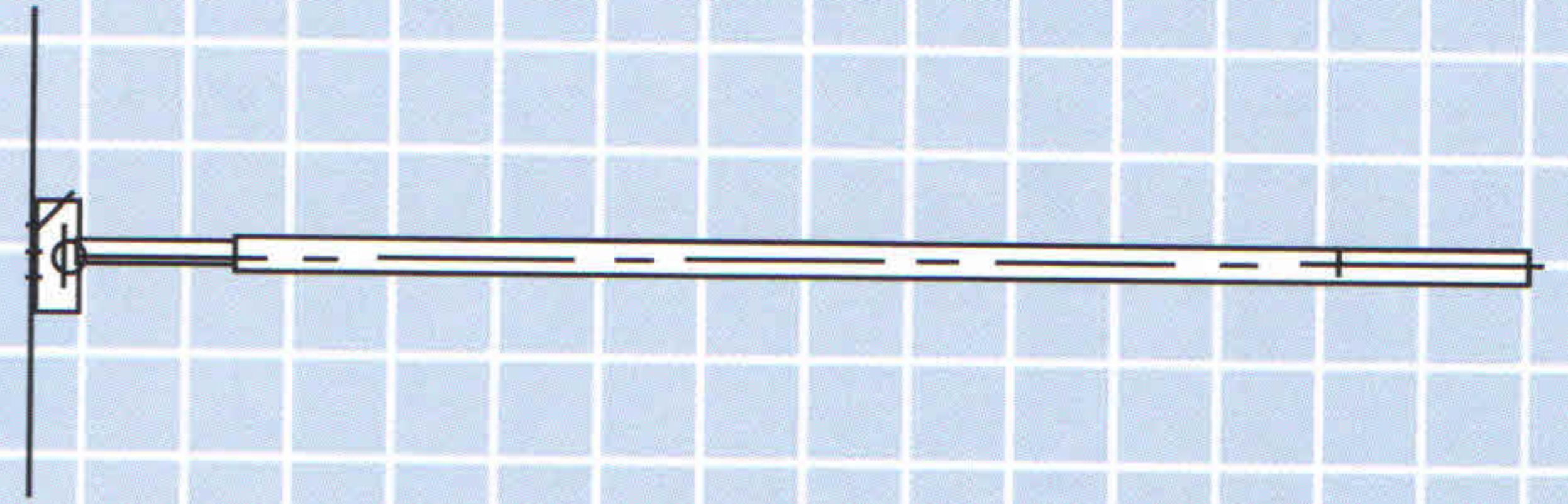
WORK STATION JIB CRANES

WALL MOUNTED

DESCRIPTION

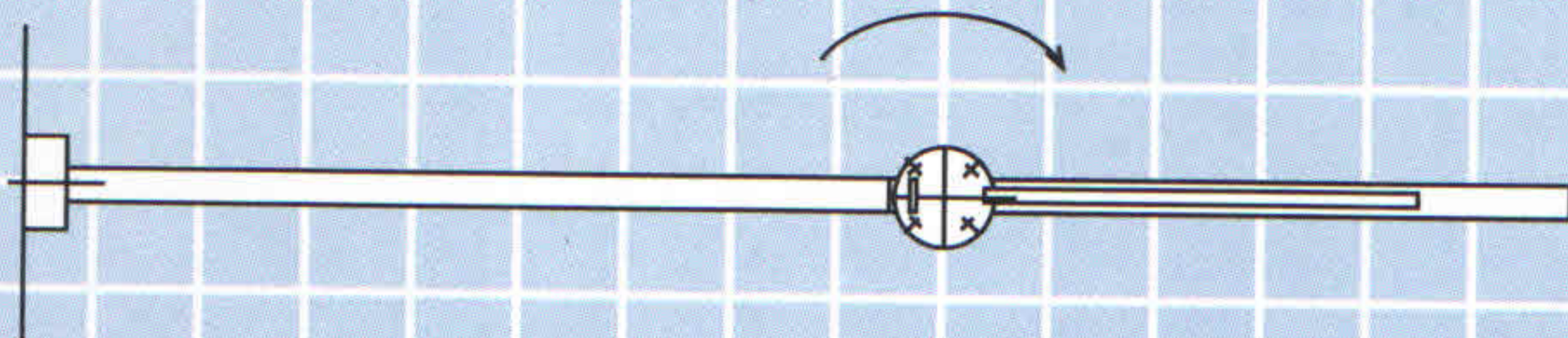
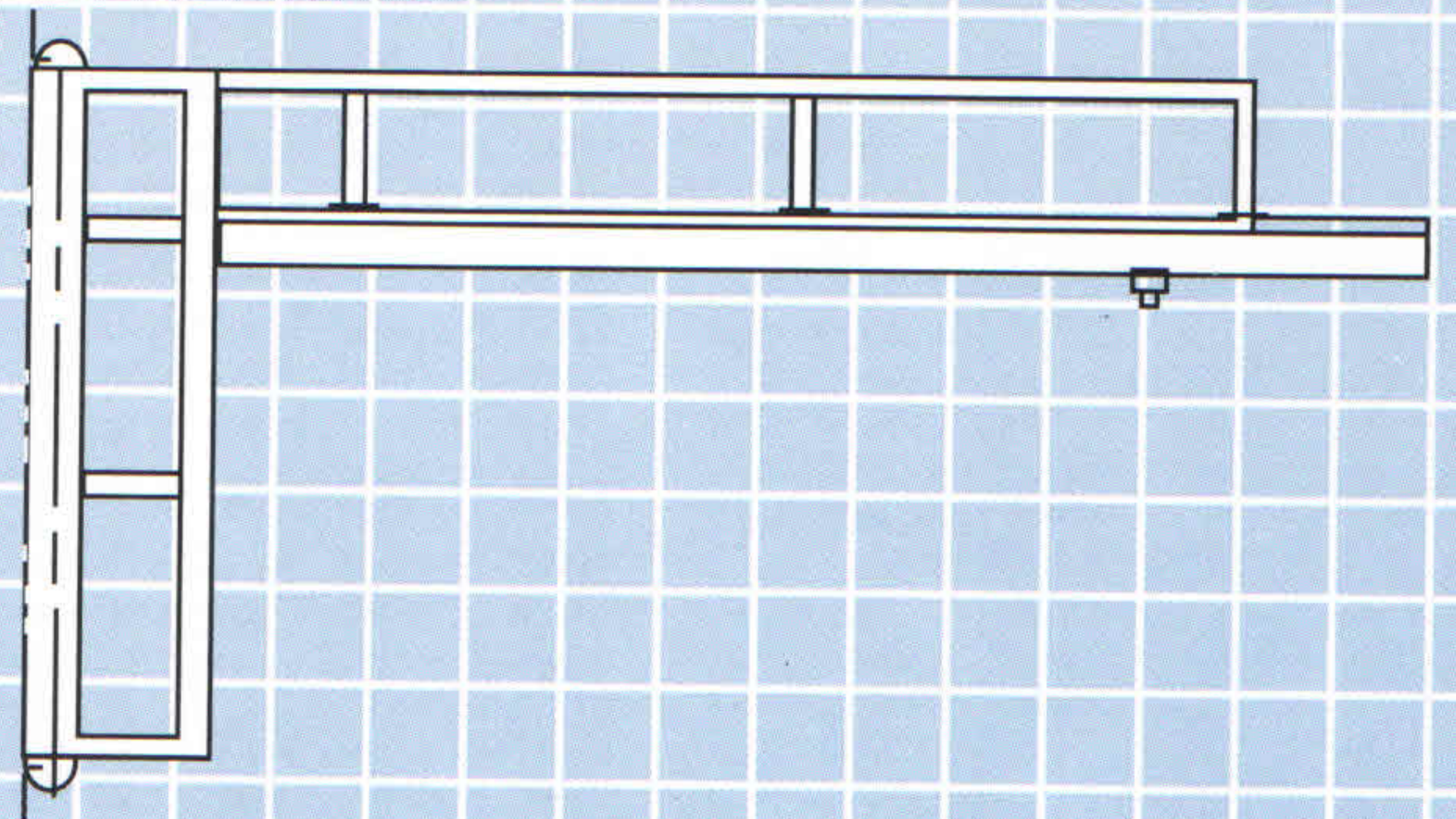
Capacity: 250 lbs. with spans from 4' to 12'
2000 lbs. with spans from 4' to 10'

- Affords 360° rotation on both inner and asouter booms
- Hosing encased in articulating joint to prevent binding and obstructed air flow
- Designed for hard to reach work areas
- Reduces amount of exertion on inner boom area by 50+%
- Also available in free standing version



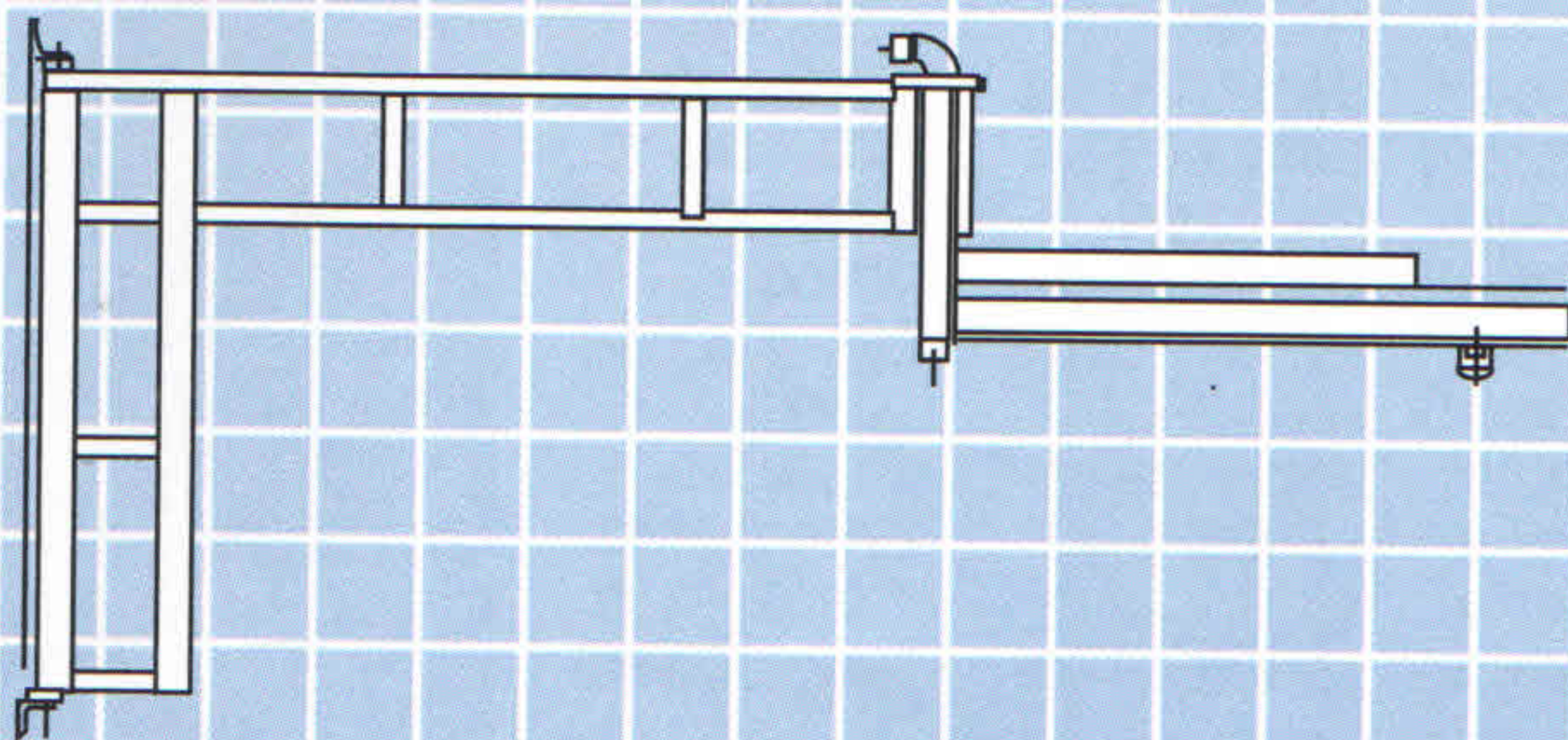
ARTICULATING BOOM

Capacity	Span	Model Number
250#	12'	ESWA12-250
	14'	ESWA14-250
350#	8'	ESWA8-350
	10'	ESWA10-350

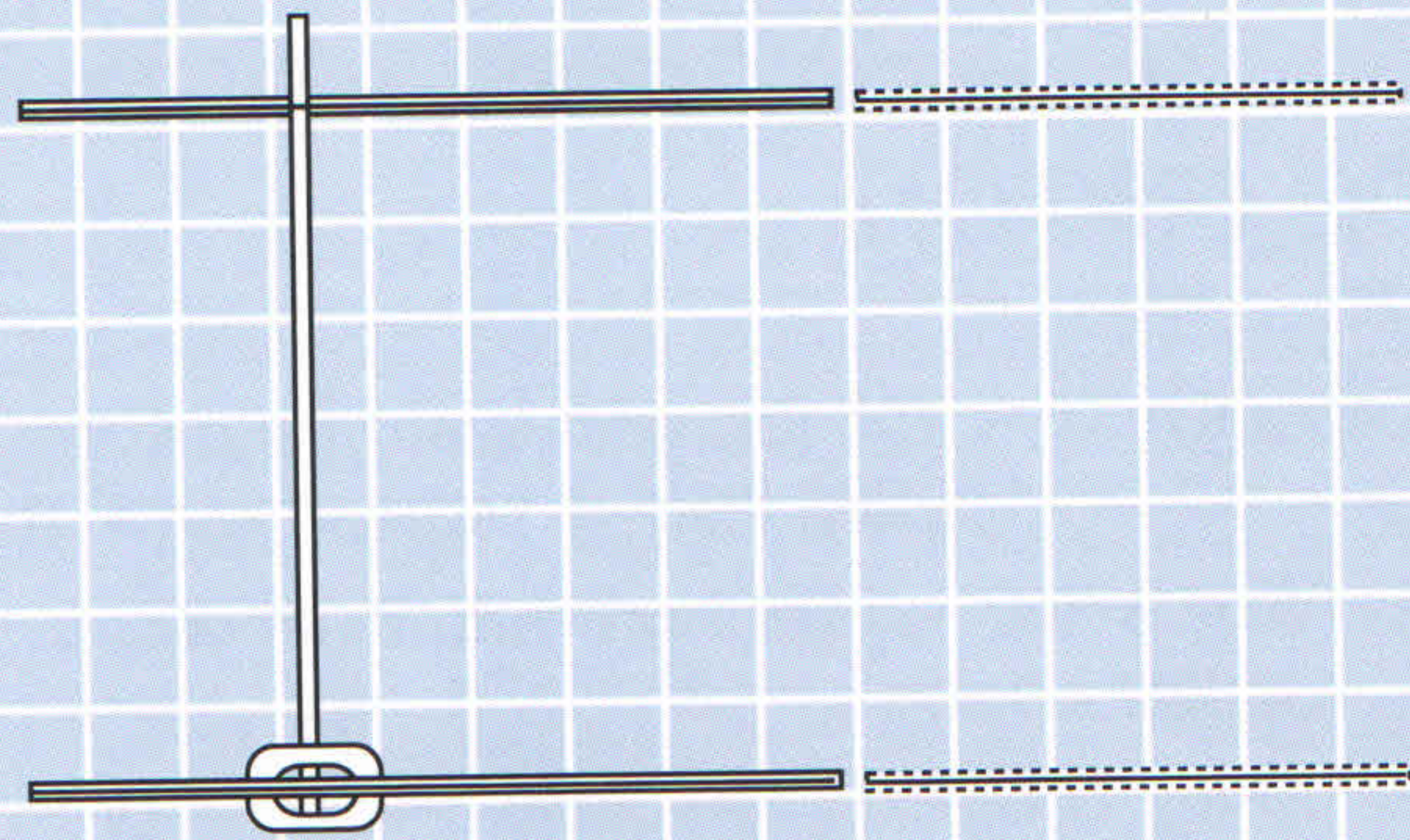
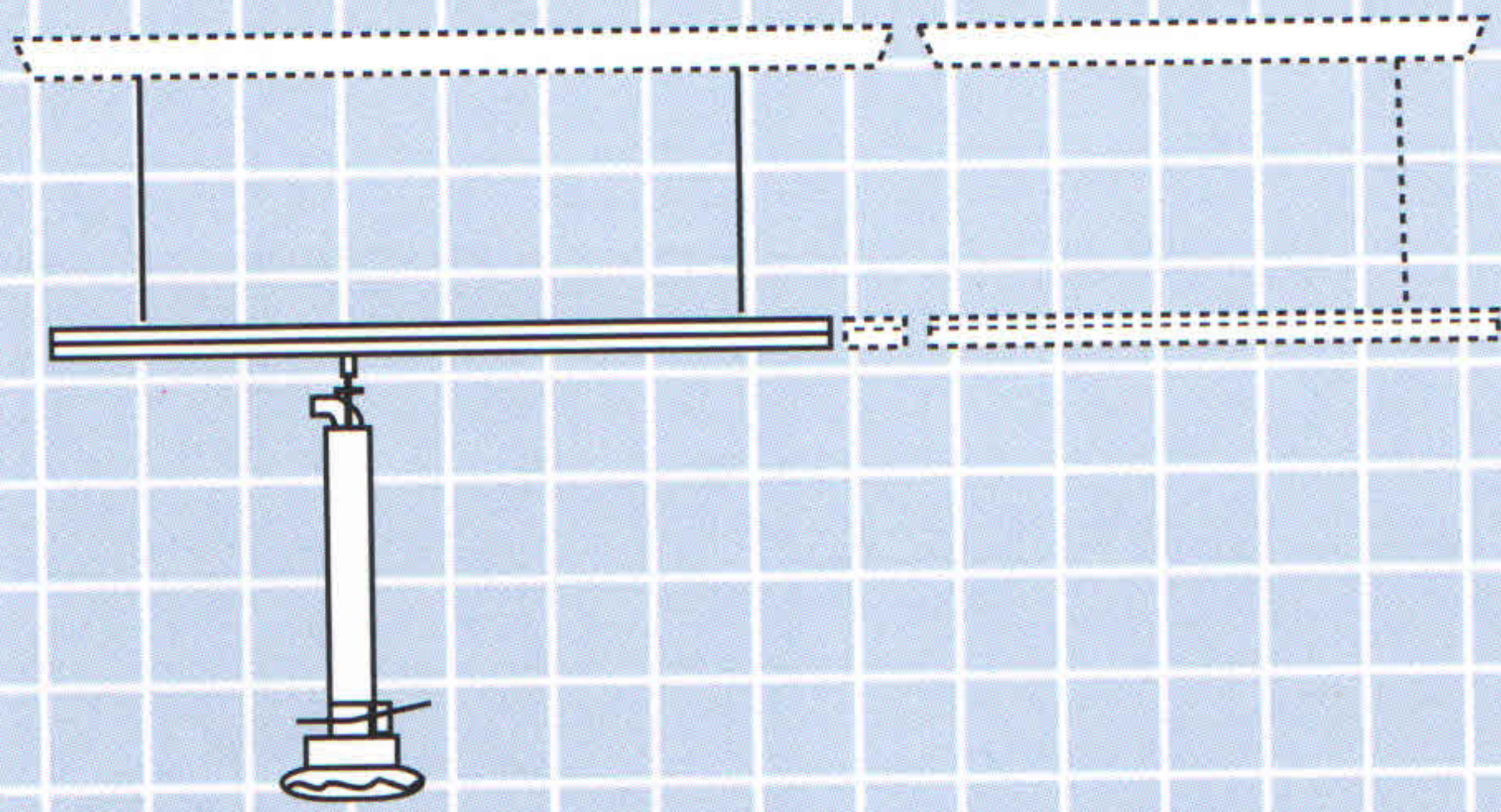


STRAIGHT BOOM

Capacity	Span	Model Number
250#	12'	ESWS12-250
	14'	ESWS14-250
350#	8'	ESWS8-350
	10'	ESWS10-350
500#	8'	ESWS8-500
	10'	ESWS10-500
1000#	12'	ESWS12-500
	8'	ESWS8-1000
2000#	10'	ESWS10-1000
	8'	ESWS8-2000
	10'	ESWS10-2000
	12'	ESWS12-2000

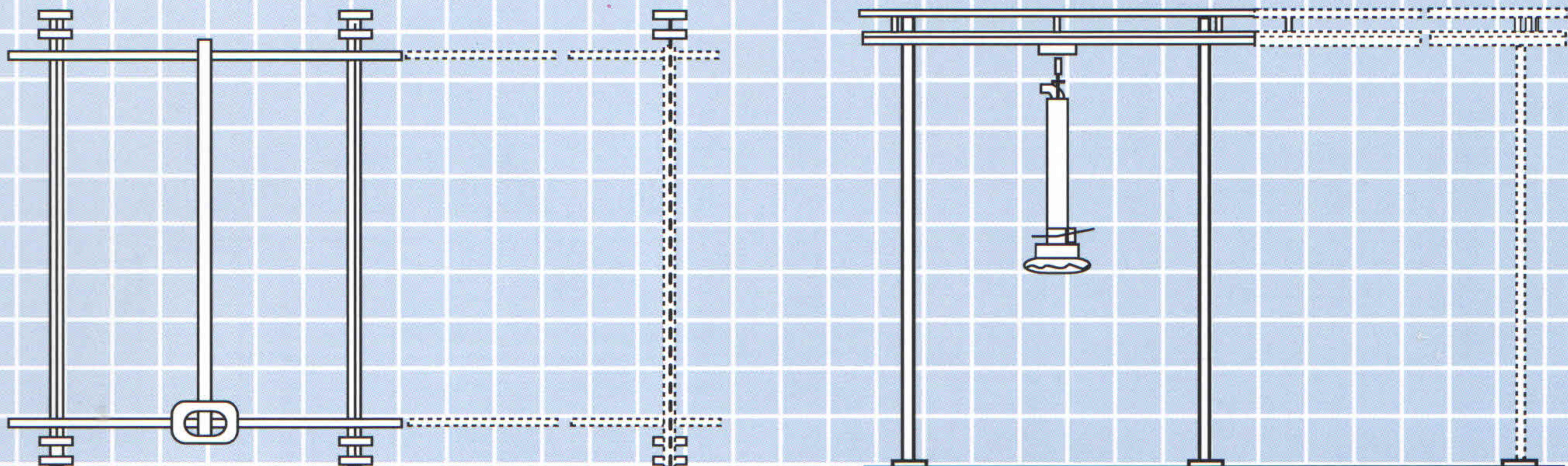


CEILING SUPPORTED BRIDGE CRANES



Bridge Length	Runway Length	250# Model No.	500# Model No.	1000# Model No.	2000# Model No.
8'0"	11'6"	ESR250-8-11	ESR500-8-11	ESR1000-8-11	ESR2000-8-11
	23'0"	ESR250-8-23	ESR500-8-23	ESR1000-8-23	ESR2000-8-23
	33'0"	ESR250-8-33	ESR500-8-33	ESR1000-8-33	ESR2000-8-33
	43'0"	ESR250-8-43	ESR500-8-43	ESR1000-8-43	ESR2000-8-43
	53'0"	ESR250-8-53	ESR500-8-53	ESR1000-8-53	ESR2000-8-53
	63'0"	ESR250-8-63	ESR500-8-63	ESR1000-8-63	ESR2000-8-63
	73'0"	ESR250-8-73	ESR500-8-73	ESR1000-8-73	ESR2000-8-73
	83'0"	ESR250-8-83	ESR500-8-83	ESR1000-8-83	ESR2000-8-83
	93'0"	ESR250-8-93	ESR500-8-93	ESR1000-8-93	ESR2000-8-93
	103'0"	ESR250-8-103	ESR500-8-103	ESR1000-8-103	ESR2000-8-103
10'0"	11'6"	ESR250-10-11	ESR500-10-11	ESR1000-10-11	ESR2000-10-11
	23'0"	ESR250-10-23	ESR500-10-23	ESR1000-10-23	ESR2000-10-23
	33'0"	ESR250-10-33	ESR500-10-33	ESR1000-10-33	ESR2000-10-33
	43'0"	ESR250-10-43	ESR500-10-43	ESR1000-10-43	ESR2000-10-43
	53'0"	ESR250-10-53	ESR500-10-53	ESR1000-10-53	ESR2000-10-53
	63'0"	ESR250-10-63	ESR500-10-63	ESR1000-10-63	ESR2000-10-63
	73'0"	ESR250-10-73	ESR500-10-73	ESR1000-10-73	ESR2000-10-73
	83'0"	ESR250-10-83	ESR500-10-83	ESR1000-10-83	ESR2000-10-83
	93'0"	ESR250-10-93	ESR500-10-93	ESR1000-10-93	ESR2000-10-93
	103'0"	ESR250-10-103	ESR500-10-103	ESR1000-10-103	ESR2000-10-103
15'0"	16'6"	ESR250-15-16	ESR500-15-16	ESR1000-15-16	ESR2000-15-16
	23'0"	ESR250-15-23	ESR500-15-23	ESR1000-15-23	ESR2000-15-23
	33'0"	ESR250-15-33	ESR500-15-33	ESR1000-15-33	ESR2000-15-33
	43'0"	ESR250-15-43	ESR500-15-43	ESR1000-15-43	ESR2000-15-43
	53'0"	ESR250-15-53	ESR500-15-53	ESR1000-15-53	ESR2000-15-53
	63'0"	ESR250-15-63	ESR500-15-63	ESR1000-15-63	ESR2000-15-63
	73'0"	ESR250-15-73	ESR500-15-73	ESR1000-15-73	ESR2000-15-73
	83'0"	ESR250-15-83	ESR500-15-83	ESR1000-15-83	ESR2000-15-83
	93'0"	ESR250-15-93	ESR500-15-93	ESR1000-15-93	ESR2000-15-93
	103'0"	ESR250-15-103	ESR500-15-103	ESR1000-15-103	ESR2000-15-103
20'0"	23'0"	ESR250-20-23	ESR500-20-23	ESR1000-20-23	ESR2000-20-23
	33'0"	ESR250-20-33	ESR500-20-33	ESR1000-20-33	ESR2000-20-33
	43'0"	ESR250-20-43	ESR500-20-43	ESR1000-20-43	ESR2000-20-43
	53'0"	ESR250-20-53	ESR500-20-53	ESR1000-20-53	ESR2000-20-53
	63'0"	ESR250-20-63	ESR500-20-63	ESR1000-20-63	ESR2000-20-63
	73'0"	ESR250-20-73	ESR500-20-73	ESR1000-20-73	ESR2000-20-73
	83'0"	ESR250-20-83	ESR500-20-83	ESR1000-20-83	ESR2000-20-83
	93'0"	ESR250-20-93	ESR500-20-93	ESR1000-20-93	ESR2000-20-93
	103'0"	ESR250-20-103	ESR500-20-103	ESR1000-20-103	ESR2000-20-103
	23'0"	23'0"	ESR250-23-23	ESR500-23-23	ESR1000-23-23
33'0"		ESR250-23-33	ESR500-23-33	ESR1000-23-33	ESR2000-23-33
43'0"		ESR250-23-43	ESR500-23-43	ESR1000-23-43	ESR2000-23-43
53'0"		ESR250-23-53	ESR500-23-53	ESR1000-23-53	ESR2000-23-53
63'0"		ESR250-23-63	ESR500-23-63	ESR1000-23-63	ESR2000-23-63
73'0"		ESR250-23-73	ESR500-23-73	ESR1000-23-73	ESR2000-23-73
83'0"		ESR250-23-83	ESR500-23-83	ESR1000-23-83	ESR2000-23-83
93'0"		ESR250-23-93	ESR500-23-93	ESR1000-23-93	ESR2000-23-93
103'0"		ESR250-23-103	ESR500-23-103	ESR1000-23-103	ESR2000-23-103

FLOOR SUPPORTED BRIDGE CRANES



Bridge Length	Runway Length	TS	250# Model No.	500# Model No.	1000# Model No.	2000# Model No.	
10'0"	11'6"	10'	ESRFS250-10-11-10	ESRFS500-10-11-10	ESRFS1000-10-11-10	ESRFS2000-10-11-10	
		12'	ESRFS250-10-11-12	ESRFS500-10-11-12	ESRFS1000-10-11-12	ESRFS2000-10-11-12	
		14'	ESRFS250-10-11-14	ESRFS500-10-11-14	ESRFS1000-10-11-14	ESRFS2000-10-11-14	
	23'0"	10'	ESRFS250-10-23-10	ESRFS500-10-23-10	ESRFS1000-10-23-10	ESRFS2000-10-23-10	
		12'	ESRFS250-10-23-12	ESRFS500-10-23-12	ESRFS1000-10-23-12	ESRFS2000-10-23-12	
		14'	ESRFS250-10-23-14	ESRFS500-10-23-14	ESRFS1000-10-23-14	ESRFS2000-10-23-14	
		10'	ESRFS250-10-33-10	ESRFS500-10-33-10	ESRFS1000-10-33-10	ESRFS2000-10-33-10	
		12'	ESRFS250-10-33-12	ESRFS500-10-33-12	ESRFS1000-10-33-12	ESRFS2000-10-33-12	
		14'	ESRFS250-10-33-14	ESRFS500-10-33-14	ESRFS1000-10-33-14	ESRFS2000-10-33-14	
	15'0"	23'0"	10'	ESRFS250-15-23-10	ESRFS500-15-23-10	ESRFS1000-15-23-10	ESRFS2000-15-23-10
			12'	ESRFS250-15-23-12	ESRFS500-15-23-12	ESRFS1000-15-23-12	ESRFS2000-15-23-12
			14'	ESRFS250-15-23-14	ESRFS500-15-23-14	ESRFS1000-15-23-14	ESRFS2000-15-23-14
10'			ESRFS250-15-33-10	ESRFS500-15-33-10	ESRFS1000-15-33-10	ESRFS2000-15-33-10	
12'			ESRFS250-15-33-12	ESRFS500-15-33-12	ESRFS1000-15-33-12	ESRFS2000-15-33-12	
14'			ESRFS250-15-33-14	ESRFS500-15-33-14	ESRFS1000-15-33-14	ESRFS2000-15-33-14	
43'0"		10'	ESRFS250-15-43-10	ESRFS500-15-43-10	ESRFS1000-15-43-10	ESRFS2000-15-43-10	
		12'	ESRFS250-15-43-12	ESRFS500-15-43-12	ESRFS1000-15-43-12	ESRFS2000-15-43-12	
		14'	ESRFS250-15-43-14	ESRFS500-15-43-14	ESRFS1000-15-43-14	ESRFS2000-15-43-14	
		10'	ESRFS250-15-53-10	ESRFS500-15-53-10	ESRFS1000-15-53-10	ESRFS2000-15-53-10	
		12'	ESRFS250-15-53-12	ESRFS500-15-53-12	ESRFS1000-15-53-12	ESRFS2000-15-53-12	
		14'	ESRFS250-15-53-14	ESRFS500-15-53-14	ESRFS1000-15-53-14	ESRFS2000-15-53-14	
20'0"	23'0"	10'	ESRFS250-15-63-10	ESRFS500-15-63-10	ESRFS1000-15-63-10	ESRFS2000-15-63-10	
		12'	ESRFS250-15-63-12	ESRFS500-15-63-12	ESRFS1000-15-63-12	ESRFS2000-15-63-12	
		14'	ESRFS250-15-63-14	ESRFS500-15-63-14	ESRFS1000-15-63-14	ESRFS2000-15-63-14	
		10'	ESRFS250-20-23-10	ESRFS500-20-23-10	ESRFS1000-20-23-10	ESRFS2000-20-23-10	
		12'	ESRFS250-20-23-12	ESRFS500-20-23-12	ESRFS1000-20-23-12	ESRFS2000-20-23-12	
		14'	ESRFS250-20-23-14	ESRFS500-20-23-14	ESRFS1000-20-23-14	ESRFS2000-20-23-14	
	33'0"	10'	ESRFS250-20-33-10	ESRFS500-20-33-10	ESRFS1000-20-33-10	ESRFS2000-20-33-10	
		12'	ESRFS250-20-33-12	ESRFS500-20-33-12	ESRFS1000-20-33-12	ESRFS2000-20-33-12	
		14'	ESRFS250-20-33-14	ESRFS500-20-33-14	ESRFS1000-20-33-14	ESRFS2000-20-33-14	
		10'	ESRFS250-20-43-10	ESRFS500-20-43-10	ESRFS1000-20-43-10	ESRFS2000-20-43-10	
		12'	ESRFS250-20-43-12	ESRFS500-20-43-12	ESRFS1000-20-43-12	ESRFS2000-20-43-12	
		14'	ESRFS250-20-43-14	ESRFS500-20-43-14	ESRFS1000-20-43-14	ESRFS2000-20-43-14	
23'0"	23'0"	10'	ESRFS250-20-53-10	ESRFS500-20-53-10	ESRFS1000-20-53-10	ESRFS2000-20-53-10	
		12'	ESRFS250-20-53-12	ESRFS500-20-53-12	ESRFS1000-20-53-12	ESRFS2000-20-53-12	
		14'	ESRFS250-20-53-14	ESRFS500-20-53-14	ESRFS1000-20-53-14	ESRFS2000-20-53-14	
		10'	ESRFS250-20-63-10	ESRFS500-20-63-10	ESRFS1000-20-63-10	ESRFS2000-20-63-10	
		12'	ESRFS250-20-63-12	ESRFS500-20-63-12	ESRFS1000-20-63-12	ESRFS2000-20-63-12	
		14'	ESRFS250-20-63-14	ESRFS500-20-63-14	ESRFS1000-20-63-14	ESRFS2000-20-63-14	
	33'0"	10'	ESRFS250-23-23-10	ESRFS500-23-23-10	ESRFS1000-23-23-10	ESRFS2000-23-23-10	
		12'	ESRFS250-23-23-12	ESRFS500-23-23-12	ESRFS1000-23-23-12	ESRFS2000-23-23-12	
		14'	ESRFS250-23-23-14	ESRFS500-23-23-14	ESRFS1000-23-23-14	ESRFS2000-23-23-14	
		10'	ESRFS250-23-33-10	ESRFS500-23-33-10	ESRFS1000-23-33-10	ESRFS2000-23-33-10	
		12'	ESRFS250-23-33-12	ESRFS500-23-33-12	ESRFS1000-23-33-12	ESRFS2000-23-33-12	
		14'	ESRFS250-23-33-14	ESRFS500-23-33-14	ESRFS1000-23-33-14	ESRFS2000-23-33-14	
43'0"	10'	ESRFS250-23-43-10	ESRFS500-23-43-10	ESRFS1000-23-43-10	ESRFS2000-23-43-10		
	12'	ESRFS250-23-43-12	ESRFS500-23-43-12	ESRFS1000-23-43-12	ESRFS2000-23-43-12		
	14'	ESRFS250-23-43-14	ESRFS500-23-43-14	ESRFS1000-23-43-14	ESRFS2000-23-43-14		
	10'	ESRFS250-23-53-10	ESRFS500-23-53-10	ESRFS1000-23-53-10	ESRFS2000-23-53-10		
	12'	ESRFS250-23-53-12	ESRFS500-23-53-12	ESRFS1000-23-53-12	ESRFS2000-23-53-12		
	14'	ESRFS250-23-53-14	ESRFS500-23-53-14	ESRFS1000-23-53-14	ESRFS2000-23-53-14		
63'0"	10'	ESRFS250-23-63-10	ESRFS500-23-63-10	ESRFS1000-23-63-10	ESRFS2000-23-63-10		
	12'	ESRFS250-23-63-12	ESRFS500-23-63-12	ESRFS1000-23-63-12	ESRFS2000-23-63-12		
	14'	ESRFS250-23-63-14	ESRFS500-23-63-14	ESRFS1000-23-63-14	ESRFS2000-23-63-14		